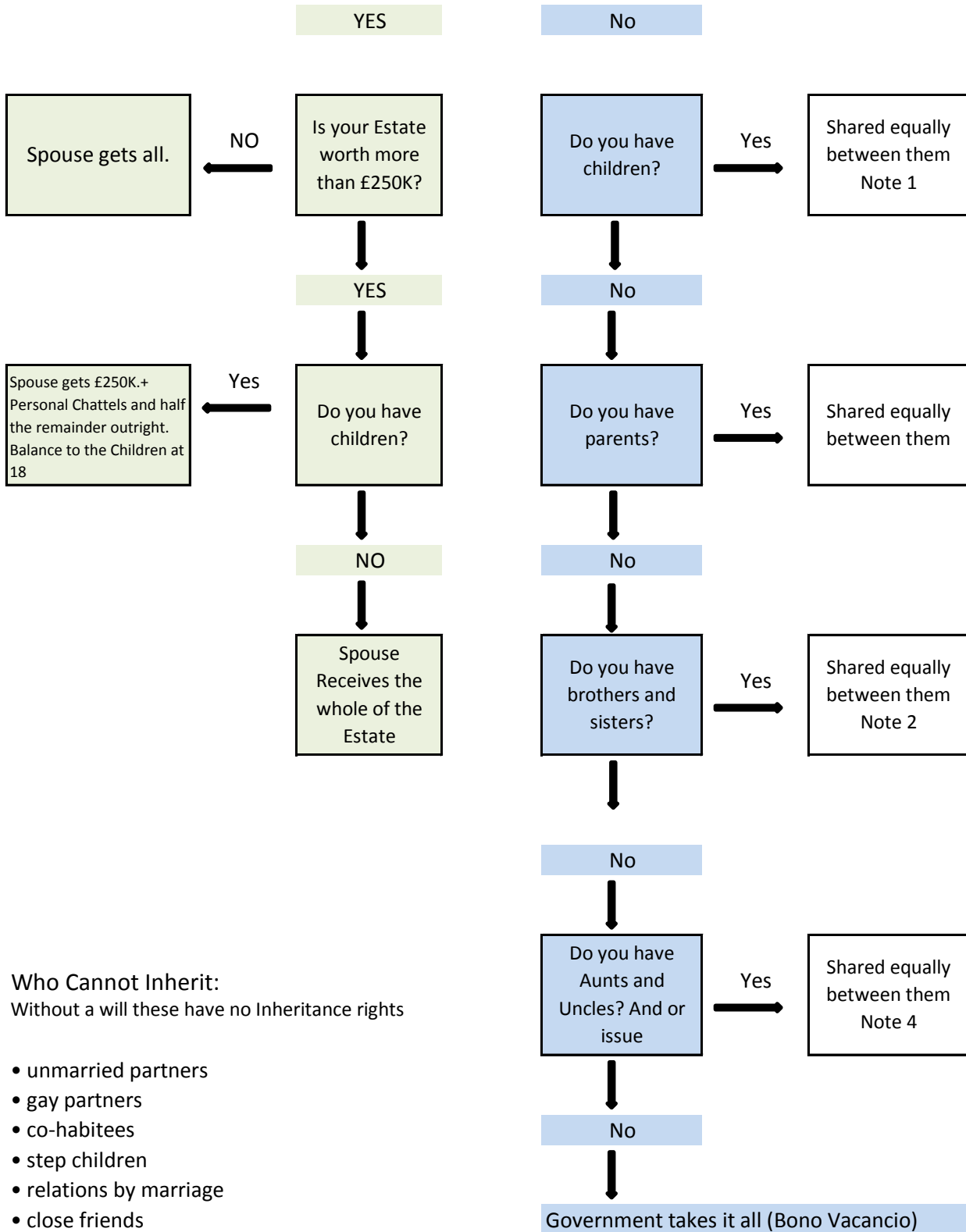


# Intestacy Flow Chart

Are you married or in a Civil Partnership?



### Who Cannot Inherit:

Without a will these have no Inheritance rights

- unmarried partners
- gay partners
- co-habitees
- step children
- relations by marriage
- close friends
- carers

Note 1

Children includes natural +illegitimate children or parental responsibility On Statutory Trust until 18

Note 2

If one sibling has died then his share will be divided among his children per stirpes

Note 3

Blood and half blood relatives will be entitled before the Govt

### Disclaimer

If you have a situation with a more complex set of relatives or a death that occurred before 1st October 2014 then you should consult a specialist to review your particular situation